



Kleos BB100 series of task chair are split in two groups. The first group, from model BB105 to BB112, is equipped with a synchronous mechanism for backrest movement automatically adaptable according to the weight of the user; the second group, the models from BB122 to BB132, come with a mechanism which allows the manual adjustment to adapt it to the build of the person sitting. The swivel task chairs Kleos BB100 differ from each other for the design and the materials used, however they share the same high quality, modern style and the best ergonomic features.

Kleos BB129 swivel task chair was designed for the operational office working day. The mobility of the backrest is adjustable in function of the weight of the user, from 45 to 120 kg. The mechanism moves in sync, according to a ratio of 4:1, backrest and seat. The seat, adjustable in depth and 455 mm wide, is upholstered in high-performance fabric and padded with high-density polyurethane foam cushions, like the backrest. Such backrest, with its rounded profile, is 500 mm high, adjustable in height, and offers incorporated lumbar support. The height of the seat can be changed from 400 mm at 520 mm. The armrests are adjustable in height and width, the support adjusts longitudinally and rotates for $\pm 30^\circ$. The basic structures, piston and armrest support, are made in durable polished aluminum.

Kleos BB129 Technical data

Synchronized mechanism

- Polypropylene shell
- 4:1 inclination ratio (backrest / seat)
- Seat height-adjustment device
- Backrest inclination device allowing four end of stroke positions between 0° and 23°
- Backrest inclination lock at 0°
- Device for the self-adjusting counter-pressure of the backrest for body weights from 45 to 120 kg
- Integrated rail for sliding seats

Seat

- Made of polypropylene composed of two shells
- Seat width 455 mm
- Seat depth 445 mm
- Sliding on rail, 100 mm stroke
- Foamed cushion in flexible polyurethane
- Standard version in black fabric

Backrest

- Made of polypropylene composed of two shells
- Backrest height 500 mm
- Height regulator, stroke up to 75 mm
- Foamed cushion made in flexible polyurethane
- Integrated lumbar support in the height-adjustable backrest
- Standard version in black fabric

Backrest support

- Connects the mechanism with the backrest allowing the synchronized seat-backrest movement, polypropylene support
- Integrated guide for backrest sliding

Armrests

- Polypropylene arm support
- Support (PAD) in soft integral Polyurethane 230x94 mm
- Adjustable in width, stroke per side 35 mm

- Adjustable in height, 100 mm stroke
- Adjustable longitudinal support stroke ± 30 mm
- 30° rotating support in 15° steps

Base

- In polished aluminum
- 5-spoke cross
- Black colour
- Diameter 680 mm
- Height 81 mm

Piston

- Made in steel
- Black colour
- Height-adjustable
- External telescopic protection tube in aluminium (optional)

Casters

- Five polypropylene casters
- Diameter 60 mm
- Free or braked in the absence of load, available for hard or soft floors

Upholstery

- 100% polyester
- Weight 390 g / m²
- Martindale wear resistance (DIN EN ISO 12947-2) 150,000 rounds
- Fire resistance certificate BS 5852 PART 0 California 117

Regulations

- DIN EN 1021
- DIN EN 1335
- DIN EN 12527
- DIN EN 12529
- ISO 21015
- ANSI/BIFMA X5.1



Dimensions

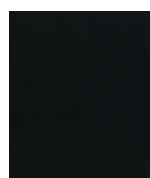


Fabric

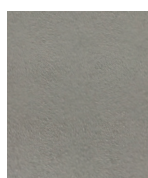
Category 3

Kleotex Tecnosoft is a 100% polyester fabric which grants great resistance to wear. The innovative stain-resistant treatment allows to remove, exclusively with water, stains of: coffee, wine, food, drinks, pens and juices.

Tecosoft



BBX21



BBX22



BBX23



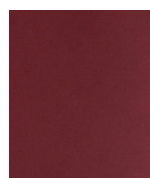
BBX24



BBX25



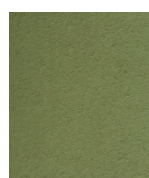
BBX26



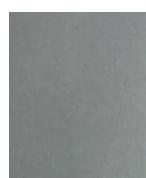
BBX27



BBX28



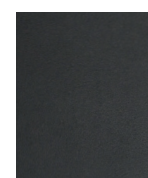
BBX29



BBX30



BBX31



BBX32

The images are for informational purposes only and may not exactly match the purchased product or accessories. Further colors and upholstery materials can be ordered by e-mail to contact@kleos.online